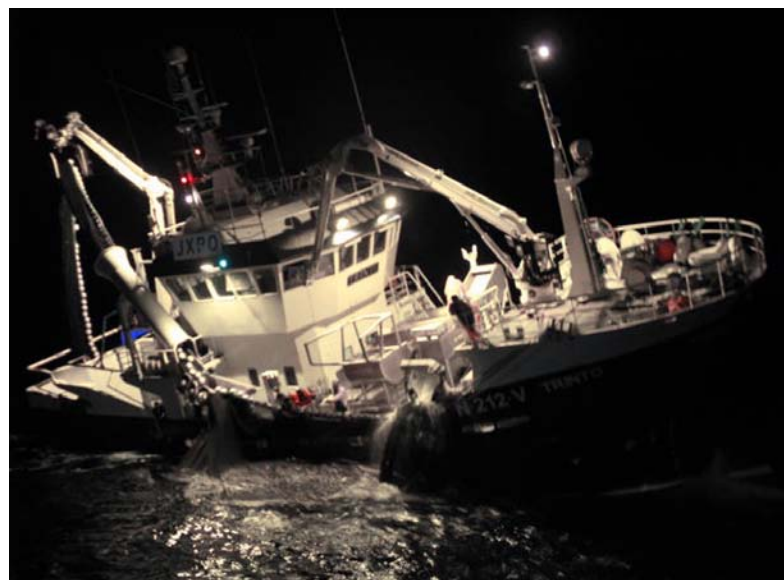
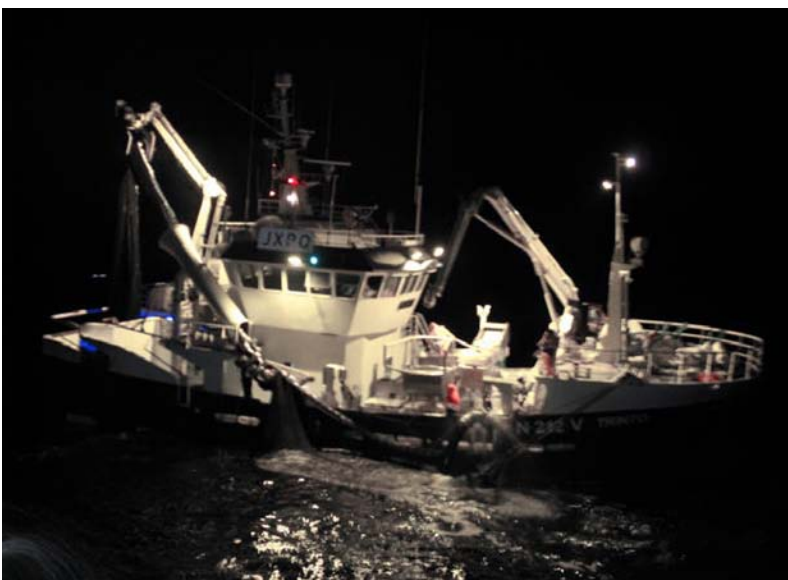


FISHING

HS  **MARINE**

the ultimate crane specialist





CRANES DESIGNED FOR FISHING

The fishing fleet demands equipment of the highest level of quality to ensure reliable operations. HS.Marine cranes are the right solution. All HS.Marine structures have been designed to take up heavy lateral forces and to have low value of flexing.

All cranes are provided with a powerful slewing system composed by slew bearing and gearboxes able to perfectly drive the crane even with relevant angle of inclination and side forces. We specifically design cranes for fishing application.



LONGER LIFESPAN

As our cranes have a longer lifespan, we offer the best value that money can buy. Our cranes simply last longer. The need of maintenance is low and the cranes are designed for easy maintenance. The crane reliability will minimize the need of spares, reducing operational costs.

This is the reason why we get so many satisfied and repeated customers.

The HS.MARINE design concept, the quality of the components and the HS.Marine surface treatment reduce maintenance and lifetime costs, simplify inspection and minimize the need for spares and recoating.

ATTENTION TO DETAIL

Excellence demands ATTENTION to detail: this is the reason why we have a real OBSESSION TO DETAIL.

We listen to our customers and we know that any small detail can make a major difference.

The crane execution, the extreme quality and our attention to detail will offer many years of safe and reliable operation at low costs of maintenance.



RELIABILITY

The fishing deck environment demands equipment of the highest level of quality to ensure reliable operations. HS.Marine design focus is RELIABILITY, combined with easy and low maintenance.

All components have been designed and selected to guarantee world wide availability, easy inspection, low maintenance and easy service. The quality of our components, the quality of our design, our obsession to detail, and our tough testing, make our cranes THE RELIABLE SOLUTION.

Our cranes are prepared for the tough marine environment. Fully watertight controls are also available.

HS MARINE

HS.MARINE IS A LEADING MANUFACTURER of ship and offshore cranes.

All HS.Marine cranes are built on **RELIABILITY**, which is achieved by preparing the crane for the tough marine environment, designing for the specific application and focusing on quality.

Standard characteristics of HS.Marine products are:

- ◆ Designed and built from the ground up for marine use
- ◆ High attention to detail
- ◆ Unparalleled strength and reliability
- ◆ Superior quality
- ◆ Extensively checked and tested
- ◆ As built detailed documentation
- ◆ Worldwide service and assistance

HS.Marine offers a wide range of optional solutions for the cranes and are always available to discuss the technical specifications, in order to find solutions that makes our cranes suited for our customers' special applications.

Discover why **small detail** can create a **major difference**.



FOLDABLE KNUCKLE
& TELESCOPIC



KNUCKLE & TELESCOPIC



KNUCKLE BOOM



TELESCOPIC BOOM



STIFF BOOM



HS.MARINE Srl
Via delle Querce, 1/3
46019 Viadana (MN)
ITALY

VAT No. IT02025300209
+39 0375 25 48 19
info@hsmarine.net
www.hsmarine.net